

# 6 New Leys, Barrow-In-Furness, LA13 9DP

## House



Located in the ever popular Newbarns Area of Barrow we have this lovely starter home for young families and first time buyers. Located on doorstep of Newbarns School with local shops in walking distances it offers a very convenient location on this lovely private street just off Whinney Ends.

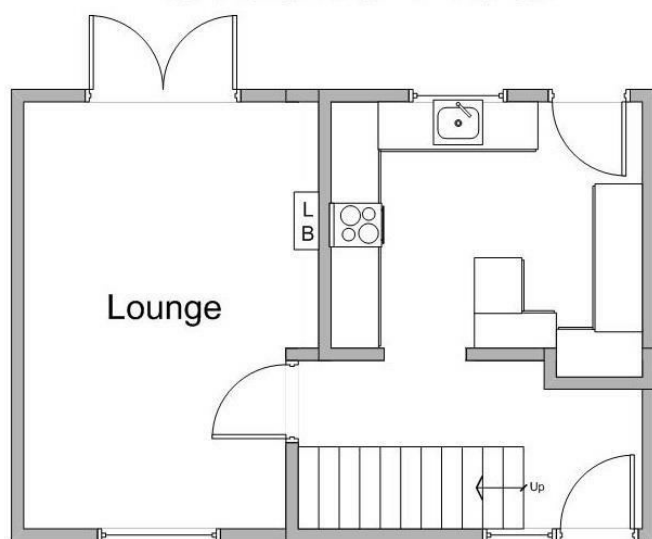
The property is well presented with a modern finish. The spacious lounge has French doors to your private decking area is a lovely family room. The log burner is a perfect addition to the room for the upcoming winter months. The modern fitted kitchen/breakfast room is a nice area for on the go families and professionals with integrated appliances.

The shower room to first floor offers a very modern feel with walk in shower cubicle with complimentary basin and WC. Two good size bedrooms are also offered with a neutral decor and finish.

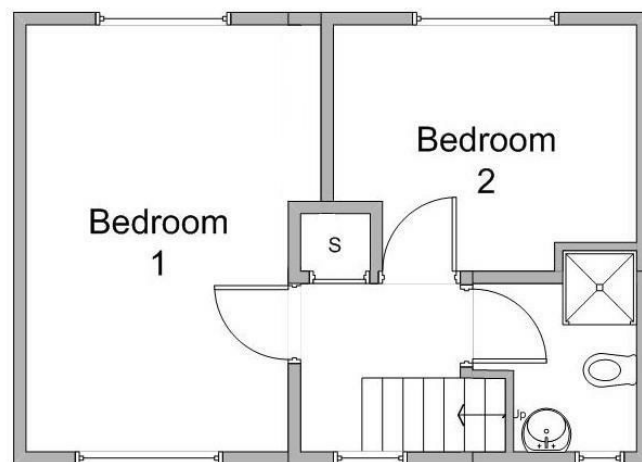
Externally the garden is majority lawned with outbuildings and the purpose built raised decking area. A lovely area to appreciate in the spring and summer months.

Council Tax Information: Band A

### Ground Floor



### First Floor



Particulars are not for contractual use, are only indicative & show typical layout, handing & sizes which may vary between plots



## Help to Buy & Part Exchange schemes available

Visit [WWW.ESTEEMHOMES.CO.UK](http://WWW.ESTEEMHOMES.CO.UK) for more information....